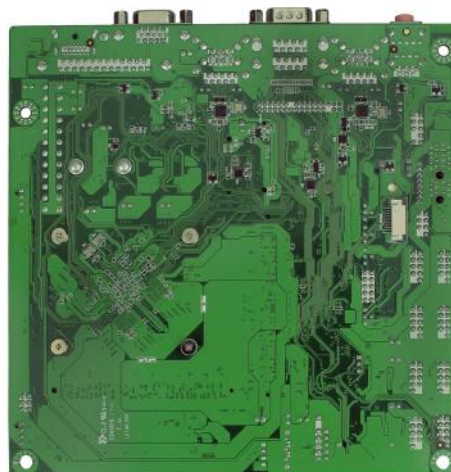


# BSW-mITX-N3160



## Specifications

CPU	Intel® Braswell N3160 2.24GHz (Burst) 1.60GHz Quad Core		
RAM	DDR3L 1600MHz memory support up to 8GB in SO-DIMM slot x2		
BIOS	AMI BIOS		
Display	Intel® HD Graphics with MultiDisplay support HDMI: resolution support up to 3840 x 2160 at 30 Hz VGA: resolution support up to 1920 x 1200 at 60 Hz LVDS: resolution support up to 1920 x 1080 at 60Hz		
Audio	Realtek ALC662VD HD Audio		
LAN	Realtek 8111H Gigabit Ethernet Controller		
Expansion	MiniPCIe (full-size) x1	PCIe x1	
Disk Support	M.2 SATA x1	SATA interface x1	
I/O Interface	8-bit GPIO x1 Line-in , Line-out, and MIC-in PS/2 interface x1 USB (ver. 2.0) x7	COM x6 (RS232/422/485 x1) LVDS x1 SIM card holder x1 USB (ver. 3.0) x3	HDMI x1 Parallel x1 SMBus x1 VGA x1
Connectors	5-pin header for SMBus x1 9-pin header for COM x4 10-pin header for 8-bit GPIO x1 32-pin header for LVDS x1 MiniPCIe slot x1 RS45 connector for GigaLan x2	6-pin header for PS/2 interface x1 9-pin header for USB2.0 x2 15-pin D-sub connector for VGA x1 ATX Power connector x1 M.2 slot (M key slot 2242/2260) for M.2 SATA x1 USB connector for USB2.0 x1	7-pin SATA connector for SATA x1 9-pin D-sub connector for COM x2 25-pin D-sub connector for Parallel x1 HDMI connector x1 Phone Jack for Line-in, Line-our, MIC-in x1 USB connector for USB3.0 x3
Power Requirement	24VDC ATX power input with ATX/AT mode		
Operating Temperature	0°C to 60°C		
Dimension	170 x170 mm		
O/S Support	Windows 10	Windows 7	Linux

